



ENTRY PRICE

Current to
31st March
2022



SELF DRIVE

Entry can be purchased on arrival.

Adults: \$43.00

Child: \$21.50 (4-15yrs)

Family \$107.50 (2 adults and 2 children)

Price includes all wildlife shows and one boat cruise

CONDITIONS

- Children must be accompanied and actively supervised by a responsible adult.
- As a condition of entry, you must comply with our COVID Safe Plan. You must provide your correct contact details on entry, exercise social distancing and frequently wash/sanitise your hands.
- If you display any signs of illness symptomatic of COVID-19, you will be denied entry.
- Failure to comply with any instructions from our staff may result in your expulsion from the property.
- We accept most major credit cards (Visa, Mastercard and Amex). Payment by credit/debit card is preferred and appreciated.
- Other entry conditions stated at Reception and on our web page.
- No concessions, reductions or discounts on the family rate.
- Discounts available for locals (with ID) and holders of some concessionary cards.

Due to Covid 19, operating hours and services may change. Please refer to our website.

Hartley's Creek Crocodile Farming Company Pty Ltd ABN 69 010 618 327 T/A Hartley's Crocodile Adventures

LOCATION



Drive your own vehicle or hire a car

40km north of Cairns, 15km north of Palm Cove
& 25km south of Port Douglas on the scenic
Captain Cook Highway.

TRANSFERS



From Cairns & Cairns Beaches

Down Under Tours (pm only) (07) 4047 9066

Beaches Meet & Greet (07) 4059 2713

From Port Douglas

Exemplar (07) 4213 3333

Excellence Coaches 0475 457 320

Private Transfers

International Coaches (07) 4032 5877

Exemplar (07) 4213 3333

Billy Tea Safaris (07) 4032 0077

Morning & afternoon departures
include all activities from time of arrival.

*Capacity restrictions may limit availability of the 3 Day Pass.

CROCTIQUE™
BESPOKE • LUXURY • LEATHER

Looking for something unique for that special person in your life?
Hartley's creates bespoke luxury crocodile skin leather goods under the Croctique brand. The skins used in the manufacture of our superb leather creations are sourced from crocodiles raised at Hartley's Crocodile Adventures. Our crocodile farm operates as a government approved 'closed farm' where no wild caught Queensland crocodiles are used for skin products. Like the pattern on a Zebra or Leopard, no two crocodile skins are the same. Each skin has an individual scale pattern making every genuine crocodile leather product unique. Croctique works with Tokyo based tanners and manufacturers renowned for their superior workmanship to produce a limited range of bespoke leather fashion accessories including hand bags, purses, men's and ladies' wallets and belts.

www.croctique.com



Hartley's Crocodile Adventures actively supports the North Queensland Wildlife Trust.

Established in 2004, the Trust raises funds for the conservation of native fauna and local habitats. For each dollar you donate to the Trust, Hartley's Crocodile Adventures will match it dollar for dollar*. Proceeds from the recycling of plastic bottles used by our visitors, now goes to the Trust. Please give generously. *conditions apply



OPEN DAILY
8.30 am - 5.00 pm
Ph: + 61 7 4055 3576

Fax: +61 7 4059 1017
CLOSED: Christmas Day &
Cairns Ironman 6 June 2021
reservations@crocodileadventures.com
www.crocodileadventures.com
PO Box 171 Palm Cove Qld Australia 4879



Printed for overseas distribution

TWOCAN 4017-0521

CROCODILES UP CLOSE!



Koala encounters

Wetland boat rides

Crocodile feeding

Wildlife presentations

World Heritage location

Licensed Restaurant



ADVENTURES
The Best Crocodile Show in Australia™





Get Close!

BIG CROC FEED™

10.30am or 1.00pm Personalised guided tour with a Hartley's Crocodile Handler.
Duration of 45 minutes for a max. of 4 participants.
\$140.00 per person self drive

- Pole feed a large Saltwater (Estuarine) Crocodile
- Learn interesting facts on both Freshwater and Estuarine Crocodiles
- Meet and hold a juvenile Estuarine Crocodile
- Receive a souvenir photo holding a juvenile croc
- A certificate signed by your Crocodile Handler
- Free bottle of chilled water



9.30am and 1.30pm An exciting, interactive guided tour featuring 5 iconic animals.
Duration of 60 minutes for a max. of 6 participants.
\$140.00 per person self drive

- Cuddle a koala and receive a souvenir photo
- Feed fruit to a cassowary
- Hold a python or lizard
- Pat a wombat
- Feed friendly birds and wallabies
- Free bottle of chilled water

MAMMAL MAGIC

11.00am and 1.15pm Meet Australian marsupials. Ideal for younger children.

Duration of 60 minutes for a max. of 6 participants.
Adult: \$140.00 Child \$70.00 per person self drive

- Feed, pat and hold some of our most adorable Australian marsupials
- Wallaby feeding and pat, with a talk, followed by holding and feeding the squirrel gliders.
- Meet a wombat and learn about their behaviours.
- The experience includes a koala talk and souvenir koala holding photo.



CONDITIONS FOR BIG CROC FEED, ZOOTASTIC 5 and MAMMAL MAGIC

- Must be booked by 4.00pm the day prior. Subject to availability.
- We cannot guarantee the above mentioned animals are available on the day.
- Start times may change. Time advised on booking.
- Minimum age for participants:
- Big Croc Feed (16 yrs), Zootastic 5 (10 yrs) and Mammal Magic (6 yrs).
- Maximum number of participants:
- Big Croc Feed (4 persons), Zootastic 5 & Mammal Magic (6 persons).
- Cost includes entry, personalised tour, boat cruise and public presentations.
- Children must be at least 130 cm tall to hold a Koala by themselves.



KOALA PHOTOS

KOALA HOLDING PHOTOS

Singles: One person holds a friendly koala for a souvenir digital photo. **\$29.00**

Couples: Two persons in one photo. One person holds the koala. **\$36.00**

The person holding the Koala must be at 130cm in height. Limited availability of Koala Holding photos. Please check with Admissions on arrival.

KOALA PATTING PHOTOS

Singles: One person stands next to a koala on a branch and gives it a pat. **\$21.00**

Couples/family: 2-5 persons stand next to a koala on a branch and give it a pat. **\$29.00**



Hartley's is one of the oldest running tourist attractions in the Cairns region. The business began in 1934 as a tea house for weary motorists, travelling the recently opened road between Cairns and Mossman.

Legend has it, the original owner Pop Evans, entertained motorists by feeding Charlie the crocodile while scones cooked in the wood stove, and became the first person in Australia to perform crocodile shows for the public. Eighty-seven years later, Hartley's world famous Crocodile Attack Show is as popular as ever.

Hartley's was also the first place in Australia to breed crocs in captivity. Work on crocodile conservation at Hartley's Creek Zoo attracted worldwide interest. Documentaries produced at Hartley's helped arouse public interest and sympathy, leading to the protection of wild crocodiles in 1974.

By now, the Zoo had established a venerable pedigree as one of North Queensland's leading attractions. Renovated in 1987 by the Freeman family, the wildlife park remained at its original site until 2002 when the brand new Hartley's Crocodile Adventures opened 500m south of Hartley's Creek, delivering authentic crocodile experiences in a truly natural setting.

DINING WITH THE CROCS

"A crocodile burger please...and make it snappy!"

Watching the crocodiles getting fed is not only thrilling but can make you feel hungry. Whether you're craving a coffee, fancying a focaccia or savouring a salad, we have a menu to suit everyone. Be adventurous and try some crocodile!

Coffee and snacks are available from 8.30am to 4.00pm from Lilies Restaurant overlooking Hartley's Lagoon. Hot and cold meals offered from the servery between 9.30am and 2.30pm. *Must pay entry fee to gain access to restaurant.*



Our junior visitors now have the chance to chill and play in our Slither n' Slide Adventure Play Zone

HARTLEY'S BREAKFAST WITH THE KOALAS

- A delicious cooked breakfast, including scrambled eggs, bacon, hash browns, sausages and toast with fruit juice, tea or coffee. Available from 8.30am to 9.30am.

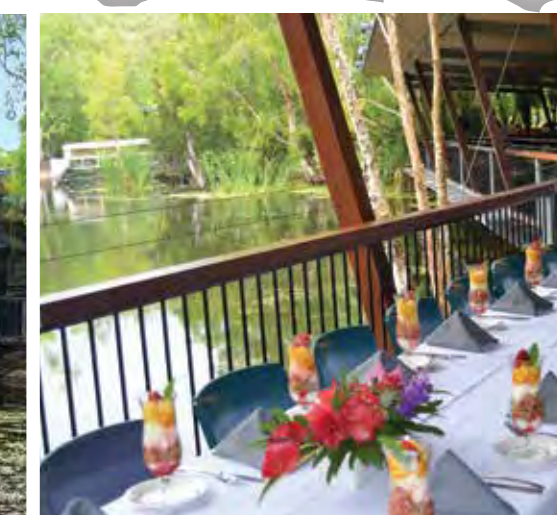
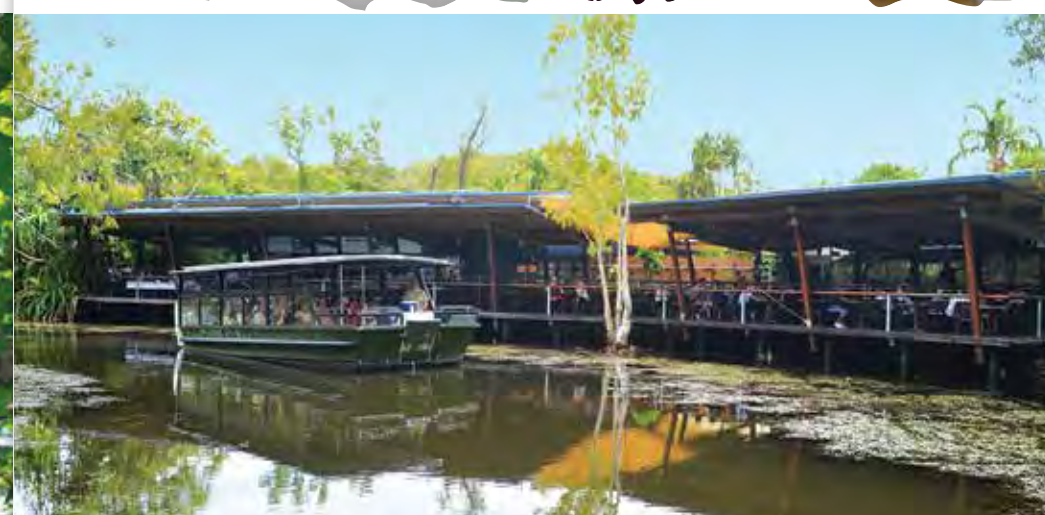


- A friendly Koala and Wildlife Keeper will join you on the dining deck between 9:00am and 9:30am.
- After breakfast, enjoy the scheduled wildlife presentations and a boat cruise on Hartley's Lagoon.

Drive yourself or book online to arrange a coach transfer from Cairns, Palm Cove or Port Douglas.

Advance bookings are required and must be made by 4:00pm the day prior, subject to availability.

Book online (www.crocodileadventures.com) or contact Reservations (07) 4055 3576 for prices, details and bookings.





Get Wild!

Let us take you on a journey of discovery into the 'wild' world of Australian native and exotic animals. Nestled in the picturesque Wangetti Valley, in the heart of the Wet Tropics World Heritage Area you will see crocodiles in a natural melaleuca wetland lagoon; cassowaries in a rare riverine rainforest; kangaroos and emus in an expansive woodland; free flight predatory birds; iconic marsupials like koalas and wombats; colourful reptiles from abroad, plus our sustainable crocodile farm.

Hartley's Crocodile Adventures has something for everyone with a passion for nature and wildlife. Our dedicated team delights in imparting their knowledge and sharing insights and stories about the natural world and how to be safe in croc territory. The daily presentations strike the balance between entertainment and meaningful content.

This family owned, local business is widely recognized as one of Australia's leading nature based eco-adventure experiences. Hartley's is



accredited by Ecotourism Australia and has been the recipient of many awards and accolades for outstanding tourism achievements and ground breaking sustainable architecture.

The visitor experience has been enriched with the recent opening the Gallery of Living Art reptile exhibit and Cotton Top Tamarin display.

After exploring the 2500 metres of boardwalks and pathways, take time to relax at Lilies licenced restaurant where you can enjoy a coffee or dine on delicious food while overlooking Hartley's Lagoon. Hartley's Breakfast with the Koalas – now available daily from 8.30 am. Pre-booking required.

The retail therapy at the Paper Bark Gift Shop will thrill the senses with its range of high quality crocodile skin leather goods manufactured from crocodiles raised on-site. The bespoke hand bags and accessories are produced in small batches, featuring gorgeous colours and custom designs.

Above all else, Hartley's Crocodile Adventures is a great day out!!



DAY TOURS

DOWN UNDER TOURS Phone: (07) 4047 9066

Please check with tour operator for various 21/22 maintenance closure dates.

HARTLEY'S HALF DAY TOURS



HCPM Cairns & Northern Beaches pick up. Scenic coastal drive to Hartley's. Free time to explore the park before the snake show, wetland cruise, Crocodile Attack Show, wallaby feeding, cassowary feeding and koala talk. Meals available (own expense). Return 4.40pm.

PHCPM Port Douglas pick up 11.45am.

The afternoon allows ample time to explore this wonderful park, including a boat cruise through the Melaleuca wetlands, the domain of the saltwater crocodile. Take in the Crocodile Attack Show and fascinating Snake Show before we return you to your accommodation. Return 4.15pm.

Cairns, Northern Beaches & Port Douglas:
Adult \$99.00 Child \$53.00 Family \$273.00

KURANDA RAIL, SKYRAIL RAINFOREST CABLEWAY and HARTLEY'S - KHC



Journey to Kuranda on the historic Scenic Railway through the spectacular Barron Gorge. Experience Skyrail Rainforest Cableway; gliding just metres above the World Heritage listed rainforest. Download Skyrail Rainforest Cableway's multi-lingual Interpretive App and Audio Guide from the App Store or Google Play that places the story of Queensland's ancient tropical rainforest directly in your hands. Transfer to Hartley's for an afternoon of activities including boat cruise, Croc Attack Show and wildlife presentations.

Cairns & Beaches Adult \$221.00 Child \$116.00 Family \$594.00

PORT DOUGLAS TRANSFERS



Morning and afternoon tours. Includes entry to Hartley's and return coach transfers.
Adult: \$96.00
Child: \$48.00
Family: \$240.00



Book online: www.crocodileadventures.com or see your tour desk.



BRETT'S KURANDA HALF DAY TOUR ex Port Douglas Phone: (07) 4098 5059

HARTLEY'S, SKYRAIL RAINFOREST CABLEWAY, KURANDA SCENIC TRAIN & PALM COVE Full day tour

Small group full day tour; pick up 8am for Hartley's morning activities including crocodile cruise, cassowary feeding, crocodile feeding show, complimentary morning tea. Transfer 11.35am for an amazing gondola experience over World Heritage listed rainforest with Skyrail Rainforest Cableway, then descend below the canopy to Freshwater on the Historic Scenic Railway. Free time to explore Palm Cove on return to Port Douglas (all food, drinks and retail therapy at own cost).

Hartley's + Skyrail & Scenic Train
Adult \$245.00 Child \$140.00 Family \$665.00
Hartley's + Skyrail OR Scenic Train
Adult \$200.00 Child \$115.00 Family \$555.00

To make a tour or transfer booking, please contact your **TOUR DESK** or the **TOUR OPERATORS** listed below

Whilst we recommend these tours and partner operators we take no responsibility for any alterations, amendments or price changes that may occur. Please note, the definition of a 'child' varies with different operators. All prices include gst.

BOOK ONLINE



BEACHES MEET & GREET Phone: (07) 4059 2713

BIG CROC FEED™ (with transfers)



Feed a giant estuarine crocodile as part of an exclusive guided tour with an experienced Hartley's crocodile expert, plus souvenir croc photo & signed Big Croc Feed certificate. Numbers limited: 2 – 4 pax, 16 yrs+, book min. 24 hours notice. Available daily and subject to availability.

Departs Cairns 8.30am : Adult \$177.00
Departs Palm Cove 9.00am : Adult \$163.00

BREAKFAST WITH THE KOALAS



Start with a hot Aussie breakfast in the company of a cute koala and its keeper. (Optional koala photos available at scheduled times after breakfast.) Enjoy the Hartley's wildlife presentations and activities, including a crocodile show and boat cruise. Departs: Cairns 8.30 am & Palm Cove 9.00 am daily. Return 1.30 pm.

Cairns & Northern Beaches: Adult \$114.00 Child \$57.00
Palm Cove: Adult \$101.00 Child \$50.50

CAIRNS AQUARIUM & HARTLEY'S COMBO



Phone: (07) 4044 7300

Meet the wildlife of Tropical North Queensland! Journey through the Cairns Aquarium to meet many aquatic animals and see the Shark and Ray feeding show before exploring Hartley's Crocodile Adventures to enjoy a boat cruise & experience the Snake show & the thrilling Crocodile Attack show.

Self-drive: Adult \$85.00 Child (3 - 14) \$49.00 Family \$237.00
With transfers: (ex Cairns Northern Beaches) 9:00am
Adult \$152.00 Child (3 - 14) \$83.00 Family \$402.00
With transfers: (ex Cairns City) 9:30am
Adult \$145.00 Child (3 - 14) \$79.00 Family \$383.00



The Edge - Skyrail Rainforest Cableway

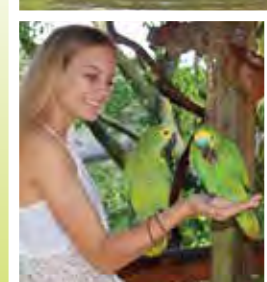


Three amazing wildlife parks within three days for one great price!

- Hartley's Crocodile Adventures** is the best place to see crocodiles in the North. See an array of native and exotic wildlife in entertaining and educational wildlife presentations.
- Kuranda Koala Gardens** is a boutique wildlife park showcasing Australia's iconic wildlife. Feed tame kangaroos, meet a Quokka and walk through the nocturnal house. Hold a Koala for a souvenir photo (extra cost).
- Birdworld Kuranda** is a large walk-thru free flight aviary housing a dazzling array of Australian birds and exotic parrots originating from the world's tropical rainforests.

Adult \$75.00 Child (4-15 years) \$37.50 Family (2 Adult + 2 Child) \$187.50

The Great Australian Wildlife Experience package is a self-drive experience. Coach transfers are not available. Visitors need to make their way to each of the three parks by car within a three day period. Purchase this package online or upon arrival at Hartley's Crocodile Adventures. Please note that the three parks are not in close proximity. Both Kuranda Koala Gardens and Birdworld Kuranda are situated within the Kuranda Heritage Markets, approximately 45 minutes drive from Hartley's. Refer to map on back page for locations.



PRESENTATIONS

RESTRICTIONS ON HOURS, ACTIVITIES & CAPACITIES

The owners reserve the right to vary the opening times, amend or cancel wildlife presentations, animal encounters and boat cruises, alter visitor capacity and restrict the availability of food and beverage without prior notice in response to government directives in relation to COVID-19, severe weather conditions, safety reasons or other operational issues.

9.00am



CASSOWARY FEEDING

Learn about these magnificent endangered rainforest birds and help our keeper to feed them.

9.00am



CROCODILE FARM TOUR

Gain an insight into the operation of our crocodile farm. Learn how farming contributes to the conservation of wild crocodiles and their habitat.

10.00am



SNAKE SHOW

Discover the world's most venomous snakes and learn how to administer first aid for snake bite.

11.00am



CROCODILE FEEDING

See a huge estuarine (saltwater) crocodile hand fed in a presentation which also features Australia's indigenous Freshwater crocodile.

1.00pm



CROCODILE FARM TOUR

Gain an insight into the operation of our crocodile farm. Learn how farming contributes to the conservation of wild crocodiles and their habitat.

2.00pm



SNAKE SHOW

Discover the world's most venomous snakes and learn how to administer first aid for snake bite.

3.00pm



CROCODILE ATTACK SHOW

"The Best Crocodile Show in Australia™" Watch our professional, experienced keepers demonstrate the notorious death roll and head shake.

4.00pm



CASSOWARY FEEDING

Learn about these magnificent endangered rainforest birds and watch them devour tropical fruit - whole!

4.30pm



KOALA TALK

Koalas sleep most of the day. Feed time is your chance to watch them come alive when presented with fresh gum leaves.

BOAT CRUISES



- Take a cruise on Hartley's Lagoon spotting crocodiles and other wildlife in this superb tropical wetland.
- Your admission fee includes one boat cruise. On arrival at Admissions you will be allocated a cruise time. Extra cruise times will be scheduled during busy periods. COVID restrictions may impact boat capacity.
- Cruise time approximately 20 minutes.

WILDLIFE PHOTOS



10.30am Koala Pat Photos
11.30am Koala Hold Photos
1.30pm Koala Pat Photos
2.30pm Koala Hold Photos
Croc and Snake holding photos available between 10.00am and 4.00pm, outside Koala photo sessions.

BOAT CRUISES

- Children must be accompanied and actively supervised by a responsible adult.
- Mobile phones must be switched off for the duration of the ride.
- Passengers must remain seated for the duration of the ride.
- No preferential allocation of seats.
- No food or drink may be consumed on the boat (except bottled water).
- Smoking is prohibited on the boats.

WHAT TO BRING

- Sensible walking shoes, a wide brimmed hat and sunscreen.
- When it is hot or very humid, you may need to drink up to three litres of water per day. Chilled water, soft drinks and snacks are available from Lilies Restaurant.
- On rainy days an umbrella or rain coat is useful.
- Your camera or video recording device. Batteries and memory cards are available to purchase at our gift shop.
- Bird Watchers may wish to bring their binoculars.
- A wheelchair is available for visitors at no charge. Check with us prior to departure from your accommodation to ensure it is available.
- A limited number of strollers are available for hire.
- Please note professional photography is not permitted without the prior written consent of management. Copyright will be jointly claimed.

EXPLORE

Hartley's Lagoon – our No.1 croc spotting spot! Tour the wetlands on a boat cruise and watch crocodiles, birds and the wildlife of the coastal melaleuca habitat.

Wildlife Discovery Trail – meet freshwater crocs, water birds and lizards and go through our tropical walk-through bird aviary.

Cassowary Walk – introduce yourself to our beautiful flightless emblems, the Cassowaries, and discover why they are so important to our rainforests. Meet owls and kookaburras in our walk-through predatory bird aviary.

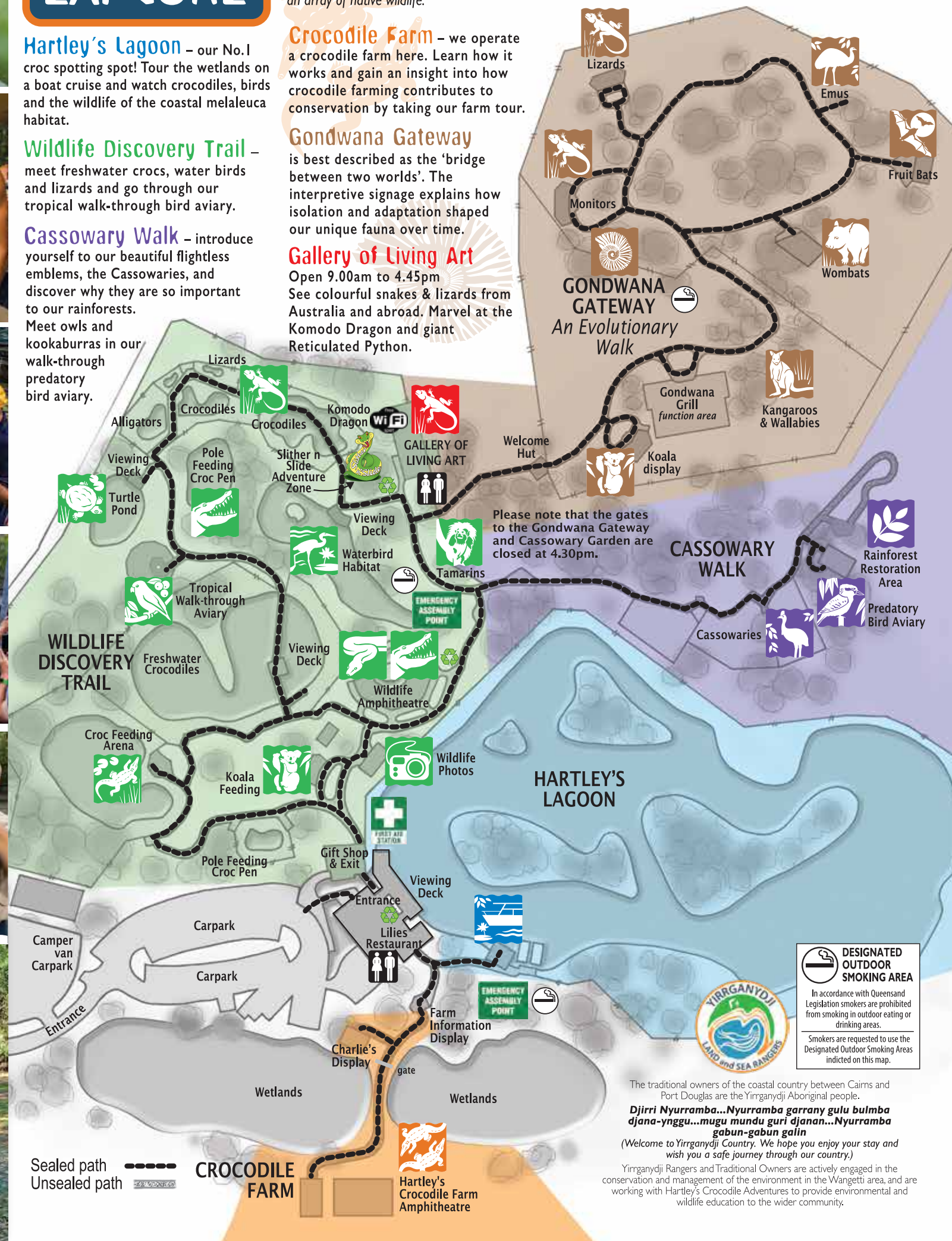
Our natural immersion exhibits are designed to enhance your viewing experience. This expansive property has undergone extensive restoration and is now a thriving habitat for an array of native wildlife.

Crocodile Farm – we operate a crocodile farm here. Learn how it works and gain an insight into how crocodile farming contributes to conservation by taking our farm tour.

Gondwana Gateway is best described as the 'bridge between two worlds'. The interpretive signage explains how isolation and adaptation shaped our unique fauna over time.

Gallery of Living Art

Open 9.00am to 4.45pm
See colourful snakes & lizards from Australia and abroad. Marvel at the Komodo Dragon and giant Reticulated Python.



Leaders in ecotourism

Ecotourism is ecologically sustainable tourism with a primary focus on experiencing natural areas that fosters environmental and cultural understanding, appreciation and conservation.

The traditional owners of the coastal country between Cairns and Port Douglas are the Yirrganydji Aboriginal people.

Djirri Nyurramba...Nyurramba garrany gulu bulmba djana-ynggu...mugu munda guri djanan...Nyurramba gabun-gabun galin

(Welcome to Yirrganydji Country. We hope you enjoy your stay and wish you a safe journey through our country.)

Yirrganydji Rangers and Traditional Owners are actively engaged in the conservation and management of the environment in the Wangetti area, and are working with Hartley's Crocodile Adventures to provide environmental and wildlife education to the wider community.