

HARTLEY'S CROCODILES

UP CLOSE!



Koala encounters • Wetland boat rides • Crocodile feeding • Wildlife presentations • Licensed Restaurant





Get Wild!

Let the Hartley's team take you on a journey of discovery into the 'wild' world of Australian native and exotic animals. Our 28 hectare wildlife sanctuary is nestled in the picturesque Wangetti Valley, in the heart of the Wet Tropics World Heritage Area. You will see crocodiles in a natural melaleuca wetland lagoon; cassowaries in a rare riverine rainforest; kangaroos and emus in an expansive woodland; free flight predatory birds; iconic marsupials like koalas and wombats; colourful reptiles from abroad, plus our sustainable crocodile farm.

Hartley's Crocodile Adventures has something for everyone with a passion for nature and wildlife. Our dedicated team delights in imparting their knowledge and sharing insights and stories about the natural world and how to be safe in croc country. Our daily presentations strike the balance between entertainment and educational content.

This family owned, local business is widely recognised as one of Australia's leading nature based advanced eco-adventure experiences.

HARTLEY'S CROCODILE ADVENTURES

Australia's leading Crocodile attraction!

The story of Hartley's begins early last century. . .

Hartley's is one of the longest established tourist attractions in the Cairns region. The business began in 1934 as a tea house for weary motorists, traversing the recently opened road between Cairns and Mossman.

Legend has it, the original owner Pop Evans, entertained motorists by feeding Charlie the resident crocodile while scones cooked in the wood stove, and become the first person in Australia to perform crocodile shows for the public. Nine decades later, Hartley's world famous Crocodile Attack Show is as popular as ever.

Hartley's was also the first place in Australia to breed crocs in captivity. Work on crocodile conservation at Hartley's Creek Zoo attracted worldwide interest. Documentaries produced at Hartley's helped arouse public interest and sympathy for crocodile conservation, leading to the protection of wild crocodiles in 1974.



By now, the Zoo had established a venerable pedigree as one of north Queensland's leading attractions. Renovated in 1987 by the Freeman family, the zoo remained at its original site until 2002 when the brand new Hartley's Crocodile Adventures opened 500m south of Hartley's Creek, delivering authentic crocodile experiences in a new sustainable eco-attraction.

Over the last 21 years, Hartley's Crocodile Adventures has continued to grow offering visitors a suite of innovative, up close wildlife experiences, along with the regular introduction of new wildlife displays. Since 2002, Hartley's has been the recipient of many awards and accolades for outstanding tourism achievements and ground breaking architecture.



SNAKE SHOW

10.00am & 2.00pm

Some say Australia is blessed with snakes – many disagree!

Learn about the many differences between pythons and venomous snakes. Listen to professional advice on how to avoid snake bite and see a demonstration on how to apply potentially lifesaving first-aid. Take the opportunity to pat a python and have your questions answered by our knowledgeable Keepers.



CROC FEEDING

11.00am

In our Hartley's Croc Feeding Arena

Come meet colourful local characters like "Dougie", who notoriously terrorised golfers in Port Douglas. Watch our Croc Handlers as they interact with large aggressive crocodiles in a natural setting, while imparting their extensive knowledge on crocodilian evolution and behaviour. Get your camera ready for the croc feeding.

Afterwards, meet Australia's Freshwater Crocodile, naturally found in the inland waterways of Northern Australia.



CROC ATTACK SHOW

3.00pm

In our Wildlife Amphitheatre

This legendary show has entertained and educated visitors to North Queensland for generations.

Learn how to stay safe in croc country and what to do if attacked by a crocodile.

Our professional Croc Handlers will entice Hagrid to demonstrate natural behaviours like the "Head Shake" and the infamous "Crocodile Death Roll", followed by a daring hand feed.



BIG CROC FEED™

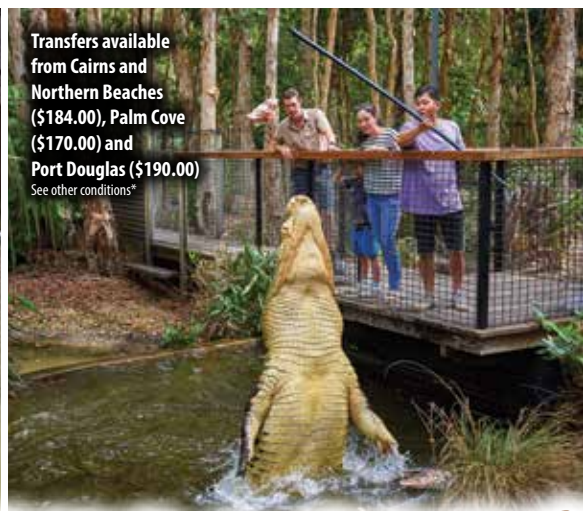
10.30am or 1.00pm

A personalised guided tour with a Hartley's Crocodile Handler.

Duration of 45 minutes for a max. of 4 participants, 16+ years of age. Bookings essential. Conditions apply*.

\$140.00 per person self drive, includes park entry.

- YOU feed a large Saltwater (Estuarine) Crocodile.
- Learn interesting facts on both Freshwater and Estuarine Crocodiles.
- Meet and hold a juvenile Estuarine Crocodile.
- Receive a souvenir photo holding a juvenile croc.
- A genuine Big Croc Feed Certificate signed by your Crocodile Handler.
- Free bottle of chilled water.



HARTLEY'S BREAKFAST WITH THE KOALAS

- A delicious cooked breakfast, including scrambled eggs, bacon, hash browns, sausages and toast with fruit juice, tea or coffee. Available from 8:30am to 9:30am.
- A friendly Koala and Wildlife Keeper will join you on the dining deck between 9:00am and 9:30am.
- After breakfast, enjoy the scheduled wildlife presentations and a boat cruise on Hartley's Lagoon.

Drive yourself or book online to arrange a coach transfer from Cairns, Palm Cove or Port Douglas.

Advance bookings are required and must be made by 4:00pm the day prior, subject to availability.

Book online (www.crocodileadventures.com) or contact Reservations (07) 4055 3576 for prices, details and bookings.



DINING WITH THE CROCS

"A crocodile burger please... and make it snappy!"

Watching the crocodiles getting fed is not only thrilling but can make you feel hungry. Whether you're craving a coffee, fancying a focaccia or savouring a salad, we have a menu to suit everyone. Be adventurous and try some crocodile!

Coffee and snacks are available from 8.30am to 4.00pm at Lilies Restaurant overlooking Hartley's Lagoon.

Hot and cold meals offered from the servery between 9.30am and 2.30pm.

Visitors must pay entry fee to gain access to restaurant.

PRESENTATIONS

RESTRICTIONS ON HOURS, ACTIVITIES & CAPACITIES

The owners reserve the right to vary the opening times, amend or cancel wildlife presentations, animal encounters and boat cruises, alter visitor capacity and restrict the availability of food and beverage without prior notice in response to government health directives, severe weather conditions, safety reasons or other operational issues.

9.00am



CASSOWARY FEEDING

Learn about these magnificent endangered rainforest birds and help our keeper to feed them.

9.00am



CROCODILE FARM TOUR

Gain an insight into the operation of our crocodile farm. Learn how farming contributes to the conservation of wild crocodiles and their habitat.

10.00am



SNAKE SHOW

Discover the world's most venomous snakes and learn how to administer first aid for snake bite.

11.00am



CROCODILE FEEDING

See a huge estuarine (saltwater) crocodile hand fed in a presentation which also features Australia's indigenous freshwater crocodile.

1.00pm



CROCODILE FARM TOUR

Gain an insight into the operation of our crocodile farm. Learn how farming contributes to the conservation of wild crocodiles and their habitat.

2.00pm



SNAKE SHOW

Discover the world's most venomous snakes and learn how to administer first aid for snake bite.

3.00pm



CROCODILE ATTACK SHOW

"The Best Crocodile Show in Australia™" Watch our professional, experienced keepers demonstrate the notorious death roll and head shake.

4.00pm



CASSOWARY FEEDING

Learn about these magnificent endangered rainforest birds and watch them devour tropical fruit - whole!

4.30pm



KOALA TALK

Koalas sleep most of the day. Feed time is your chance to watch them come alive when presented with fresh gum leaves.

BOAT CRUISES



- Take a cruise on Hartley's Lagoon spotting crocodiles and other wildlife in this superb tropical wetland.
- Your admission fee includes one boat cruise. On arrival at Admissions you will be allocated a cruise time. Extra cruise times will be scheduled during busy periods.
- Cruise time approximately 20 minutes.

WILDLIFE PHOTOS



10.30am Koala Pat Photos

1.30pm Koala Pat Photos

11.30am Koala Hold Photos

2.30pm Koala Hold Photos

Croc and Snake holding photos available between 10.00am and 4.00pm, outside Koala photo sessions.

BOAT CRUISES

- Children must be accompanied and actively supervised by a responsible adult.
- Mobile phones must be switched off for the duration of the ride.
- Passengers must remain seated for the duration of the ride.
- No preferential allocation of seats.
- No food or drink may be consumed on the boat (except bottled water).
- Smoking/vaping is prohibited on the boats.

WHAT TO BRING

- Sensible walking shoes, a wide brimmed hat and sunscreen.
- You are welcome to bring your own water. Chilled bottled water and soft drinks are available from Lilies Restaurant. Please note, no town water supply at Hartley's.
- On rainy days, an umbrella or raincoat is handy.
- Your camera or video recording device. Batteries and memory cards are available to purchase at our gift shop.
- Bird Watchers may wish to bring their binoculars.
- A wheelchair is available for visitors at no charge. Prior booking recommended.
- A limited number of strollers are available for hire.
- Professional photography is not permitted without the prior written consent of management. Copyright will be jointly claimed.



EXPLORE

Hartley's Lagoon – No.1 for croc spotting! Tour the wetlands on a boat cruise and watch crocodiles, birds and the wildlife of the coastal melaleuca habitat.

Wildlife Discovery Trail – meet freshwater crocs, water birds and lizards. Explore our tropical walk-through bird aviary.

Cassowary Walk – introduce yourself to our beautiful flightless emblems, the Cassowaries, and discover why they are so important to our rainforests.

Meet owls and kookaburras in our walk-through predatory bird aviary.

Our natural immersion exhibits are designed to enhance your viewing experience. This expansive property has undergone extensive restoration and is now a thriving habitat for an array of native wildlife.

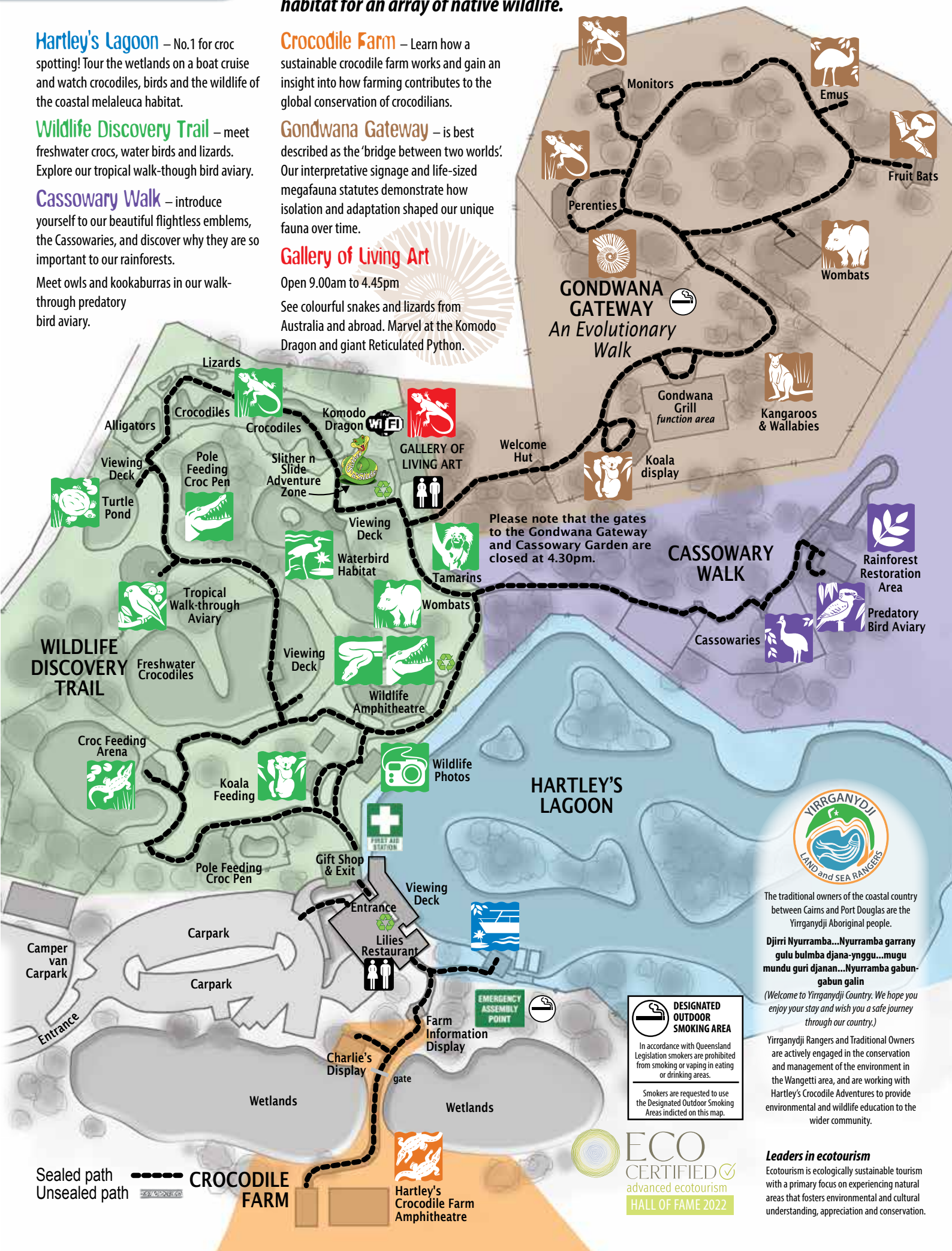
Crocodile Farm – Learn how a sustainable crocodile farm works and gain an insight into how farming contributes to the global conservation of crocodilians.

Gondwana Gateway – is best described as the 'bridge between two worlds'. Our interpretative signage and life-sized megafauna statues demonstrate how isolation and adaptation shaped our unique fauna over time.

Gallery of Living Art

Open 9.00am to 4.45pm

See colourful snakes and lizards from Australia and abroad. Marvel at the Komodo Dragon and giant Reticulated Python.



GONDWANA GATEWAY An Evolutionary Walk

Please note that the gates to the Gondwana Gateway and Cassowary Garden are closed at 4.30pm.

CASSOWARY WALK



The traditional owners of the coastal country between Cairns and Port Douglas are the Yirrganydji Aboriginal people.

Djirri Nyurramba...Nyurramba garrany gulu bulmba djana-nyngu...mugu mundu guri djanan...Nyurramba gabun-gabun galin

(Welcome to Yirrganydji Country. We hope you enjoy your stay and wish you a safe journey through our country.)

Yirrganydji Rangers and Traditional Owners are actively engaged in the conservation and management of the environment in the Wangetti area, and are working with Hartley's Crocodile Adventures to provide environmental and wildlife education to the wider community.

DESIGNATED OUTDOOR SMOKING AREA
In accordance with Queensland Legislation smokers are prohibited from smoking or vaping in eating or drinking areas.
Smokers are requested to use the Designated Outdoor Smoking Areas indicated on this map.

ECO CERTIFIED
advanced ecotourism
HALL OF FAME 2022

Leaders in ecotourism

Ecotourism is ecologically sustainable tourism with a primary focus on experiencing natural areas that fosters environmental and cultural understanding, appreciation and conservation.

Sealed path ——— CROCODILE FARM
Unsealed path ———



Hartley's Crocodile Farm Amphitheatre



Get Close!

KOALA PHOTOS

KOALA HOLDING PHOTOS

Singles: One person holds a friendly koala for a souvenir digital photo. **\$33.00**

Couples: Two persons in one photo. One person holds the koala. **\$39.00**

The person holding the koala must be at least 130cm in height. Limited availability of Koala Holding photos. Please check with Admissions on arrival.

KOALA PATTING PHOTOS

Singles: One person stands next to a koala on a branch and gives it a pat. **\$24.00**

Couples/family: 2-5 persons stand next to a koala on a branch and give it a pat. **\$33.00**

PYTHON & CROC HOLDING PHOTOS

\$26.00

Hold a friendly python or a small saltwater crocodile.

Photo session times: 10.00am – 4.00pm, except during koala photo sessions.

FRESHIE FEED \$15.00

Pole feed a freshwater croc!

Fun for the whole family.

Available from October to April, after the 11.00am Crocodile feeding. Subject to availability. Limited numbers. Pay at Hartley's admissions on the day.

Support

WILDLIFE CONSERVATION!

FOR EVERY PHOTO PURCHASED, \$2.00 GOES TO THE NORTH QUEENSLAND WILDLIFE TRUST - for the conservation of native fauna and local habitats.



ZOOTASTIC™ WILDLIFE 5 ENCOUNTERS

9.30am & 1.30pm

An exciting, interactive guided tour featuring 5 iconic animals. Min. age 10 years.

Duration of 60 minutes for a max. of 6 participants.

\$140.00 per person self drive, includes entry

- Cuddle a koala and receive a souvenir photo
- Feed fruit to a cassowary
- Hold a python or lizard
- Pat a wombat
- Feed friendly birds and wallabies
- Free bottle of chilled water

MAMMAL*MAGIC

11.00am or 1.15pm

11.00am or 1.15pm Meet the cute and fluffy! Ideal for younger children. Min. age 6 years.

Duration of 60 minutes for a max. of 6 participants.

Adult: \$140.00 Child \$70.00 per person self drive, includes entry

Feed, pat and hold some of our most adorable mammals and Australian marsupials

- Meet our cotton top tamarins
- Feed our kangaroos and wallabies
- Get close to a wombat for a feed and pat
- Learn about koalas and receive a souvenir koala holding photo



REPTASTIC REPTILE 5 ENCOUNTERS

10.45am

If you're intrigued by all things scaly, then this is the ultimate tour! Min. age 10 years.

Duration of 60 minutes for a max. of 6 participants.

\$140.00 per person self drive, includes entry

- Hold a python or baby crocodile for a souvenir photo
- Get close with giant pythons, American alligators, lizards and exotic tortoises
- Optional upgrade (\$25) to include close encounter with a Komodo Dragon
- Free bottle of chilled water

WITH TRANSFERS

- **From Cairns and Northern Beaches \$184.00**
- **From Palm Cove \$170.00**
- **From Port Douglas \$190.00**

*CONDITIONS FOR WILDLIFE ENCOUNTERS

- Must be booked by 4.00pm the day prior. Subject to availability.
- We cannot guarantee the above mentioned animals are available on the day.
- Start times may change. Time advised on booking.
- Cost includes entry, personalised tour, boat cruise and public presentations.
- Children must be at least 130 cm tall to hold a koala by themselves.

DAY TOURS

To make a tour or transfer booking, please contact your **TOUR DESK** or the **TOUR OPERATORS** listed below.

Whilst we recommend these tours and partner operators we take no responsibility for any alterations, amendments or price changes that may occur. Please note, the definition of a 'child' varies with different operators. All prices include GST.



DOWN UNDER TOURS

Phone: (07) 4047 9066

HARTLEY'S HALF DAY TOURS

HCPM - Cairns & Northern Beaches pick up.

Scenic coastal drive to Hartley's. Free time to explore the park before the snake show, wetland cruise, Crocodile Attack Show, wallaby feeding, cassowary feeding and koala talk. Meals available (own expense). Return 4.40pm.

PHCPM - Port Douglas pick up 11.00am.

The afternoon allows ample time to explore this wonderful park, including a boat cruise through the Melaleuca wetlands, the domain of the saltwater crocodile. Take in the Crocodile Attack Show and fascinating Snake Show before we return you to your accommodation. Return 3.45pm.

Cairns, Northern Beaches & Port Douglas:

Adult \$114.00 Child \$61.00 Family \$315.00

KURANDA RAIL, SKYRAIL RAINFOREST CABLEWAY and HARTLEY'S

KHCXC - Journey to Kuranda on the historic Scenic Railway through the spectacular Barron Gorge.

Experience Skyrail Rainforest Cableway; gliding just metres above the World Heritage listed rainforest. Download Skyrail Rainforest Cableway's multi-lingual Interpretive App and Audio Guide. Transfer to Hartley's for an afternoon of activities including boat cruise, Crocodile Attack Show and wildlife presentations.

Cairns & Beaches:

Adult \$243.00 Child \$128.00 Family \$655.00

Please check with Down Under Tours for days of operation or visit our website for details.



PORT DOUGLAS TRANSFERS

Book online: www.crocodileadventures.com

or see your tour desk.

Morning and afternoon tours. Includes entry to Hartley's and return coach transfers.

Adult \$99.00 Child \$49.50 Family \$247.50

BRETT'S KURANDA HALF DAY TOUR

ex Port Douglas

Book online: www.kurandatours.com.au

Phone: (07) 4098 5059

HARTLEY'S, SKYRAIL RAINFOREST CABLEWAY, KURANDA SCENIC TRAIN & PALM COVE Full day tour

Small group full day tour; pick up 8am for Hartley's morning activities including crocodile cruise, cassowary feeding, crocodile feeding show, complimentary morning tea. Transfer 11.35am for an amazing gondola experience over World Heritage listed rainforest with Skyrail Rainforest Cableway, then descend below the canopy to Freshwater on the historic Scenic Railway. Free time to explore Palm Cove on return to Port Douglas (all food, drinks and retail therapy at own cost).

Hartley's + Skyrail & Scenic Train:

Adult \$250.00 Child \$145.00 Family \$680.00

Hartley's + Skyrail OR Scenic Train:

Adult \$205.00 Child \$120.00 Family \$580.00



BEACHES MEET & GREET

Phone: (07) 4059 2713

BIG CROC FEED™ (with transfers)

Feed a giant estuarine crocodile as part of an exclusive guided tour with an experienced Hartley's crocodile expert, plus souvenir croc photo & signed Big Croc Feed certificate. Numbers limited: 2 - 4 pax, 16 yrs+, book min. 24 hours notice.

Available daily but subject to availability.

Departs Cairns 8.30am: Adult \$184.00

Departs Palm Cove 9.00am: Adult \$170.00

BREAKFAST WITH THE KOALAS

Start with a hot Aussie breakfast in the company of a cute koala and its keeper. (Optional koala photos available at scheduled times after breakfast.) Enjoy the Hartley's wildlife presentations and activities, including a crocodile show and boat cruise. Departs: Cairns 8.30 am & Palm Cove 9.00 am daily. Return 1.30 pm.

Cairns & Northern Beaches:

Adult \$126.00 Child \$63.00

Palm Cove: Adult \$112.00 Child \$56.00

CAIRNS AQUARIUM & HARTLEY'S COMBO

Phone: (07) 4044 7300

Meet the wildlife of Tropical North Queensland! Journey through the Cairns Aquarium to meet many aquatic animals and see the shark and ray feeding show before exploring Hartley's Crocodile Adventures to enjoy a boat cruise & experience the Snake Show & the thrilling Crocodile Attack Show.

Self-drive:

Adult \$97.00 Child (3-14) \$52.50 Family \$259.50



Three amazing wildlife parks within five days for one great price!

- 1 Hartley's Crocodile Adventures** is the best place to see crocodiles in the North. See an array of native and exotic wildlife in entertaining and educational wildlife presentations.
- 2 Kuranda Koala Gardens** is a boutique wildlife park showcasing Australia's iconic wildlife. Feed tame kangaroos, meet a quokka and walk through the nocturnal house. Hold a koala for a souvenir photo (extra cost).
- 3 Birdworld Kuranda** is a large walk-thru free flight aviary housing a dazzling array of Australian birds and exotic parrots originating from the world's tropical rainforests.

Adult \$78.00 Child (4-15 years) \$39.00 Family (2 Adult + 2 Child) \$195.00

The Great Australian Wildlife Experience package is a self-drive experience. Coach transfers are not available. Visitors need to make their way to each of the three parks by car within a five day period. Purchase this package online or upon arrival at attraction. Please note that the three parks are not in close proximity. Both Kuranda Koala Gardens and Birdworld Kuranda are situated within the Kuranda Heritage Markets, approximately 45 minutes drive from Hartley's. Refer to map on back page for locations.





ENTRY PRICE

LOCATION

SELF DRIVE

Entry can be purchased on arrival

Adults: \$45.00

Child: \$22.50 (4-15yrs)

Family: \$112.50

(2 adults and 2 children)

Price includes all wildlife shows and one boat cruise

DRIVE YOUR OWN VEHICLE OR HIRE A CAR

40km north of Cairns, 15km north of Palm Cove & 25km south of Port Douglas on the scenic Captain Cook Highway.



TRANSFERS

From Cairns & Cairns Beaches

Beaches Meet & Greet (07) 4059 2713

Down Under Tours (pm only) (07) 4047 9066

From Port Douglas

Exemplar (07) 4213 3333

Excellence Coaches 0475 457 320

Down Under Tours (am only) (07) 4047 9066

RogersRides 0450 804 495

Private Transfers

International Coaches (07) 4032 5877

Exemplar (07) 4213 3333

Morning & afternoon departures include all activities from time of arrival.



Hartley's Crocodile Adventures actively supports the North Queensland Wildlife Trust. Established in 2004, the Trust raises funds for the conservation of native fauna and local habitats. For each dollar you donate to the Trust, Hartley's Crocodile Adventures will match it dollar for dollar*. Proceeds from the recycling of plastic bottles used by our visitors, now goes to the Trust. Please give generously.

*Conditions apply

*Capacity restrictions may limit availability of the 3 Day Pass.

CROCTIQUE™

BESPOKE • LUXURY • LEATHER

Looking for something unique for that special person in your life? Hartley's creates bespoke luxury crocodile skin leather goods under the Croctique brand. The skins used in the manufacture of our superb leather creations are sourced from crocodiles raised at Hartley's Creek Crocodile Farm. Our crocodile farm operates as a government approved 'closed farm' where no wild caught Queensland crocodiles are used for skin products. Like the pattern on a Zebra or Leopard, no two crocodile skins are the same. Each skin has an individual scale pattern making every genuine crocodile leather product unique. Croctique works with Tokyo based tanners and manufacturers renowned for their superior workmanship to produce a limited range of bespoke leather fashion accessories including hand bags, purses, men's and ladies' wallets and belts.

www.croctique.com



IMPRESSART 0223 Printed for overseas distribution.



OPEN DAILY

8.30 am - 5.00 pm

Ph: + 61 7 4055 3576

crocodileadventures.com

CLOSED: Christmas Day, Cairns Ironman 18th June 2023 & Gran Fondo 8th September 2023 (morning only)

4019 Captain Cook Highway, WANGETTI 4877

Email: reservations@crocodileadventures.com • Fax: +61 7 4059 1017
PO Box 171 Palm Cove Qld Australia 4879

CONDITIONS

- Children must be accompanied and actively supervised by a responsible adult.
- As a condition of entry, you must comply with any applicable government health and safety directive which may be enforceable at the time of entry.
- Failure to comply with any instructions from our staff may result in your expulsion from the property.
- Rude and/or abusive behaviour towards staff, contractors or fellow visitors will not be tolerated.
- We accept most major credit cards (Visa, Mastercard and Amex). Payment by credit/debit card is preferred and appreciated.
- Other entry conditions stated at Reception and on our web page.
- No concessions, reductions or discounts on the family rate.
- Discounts available for locals (with ID) and holders of some concessionary cards.

