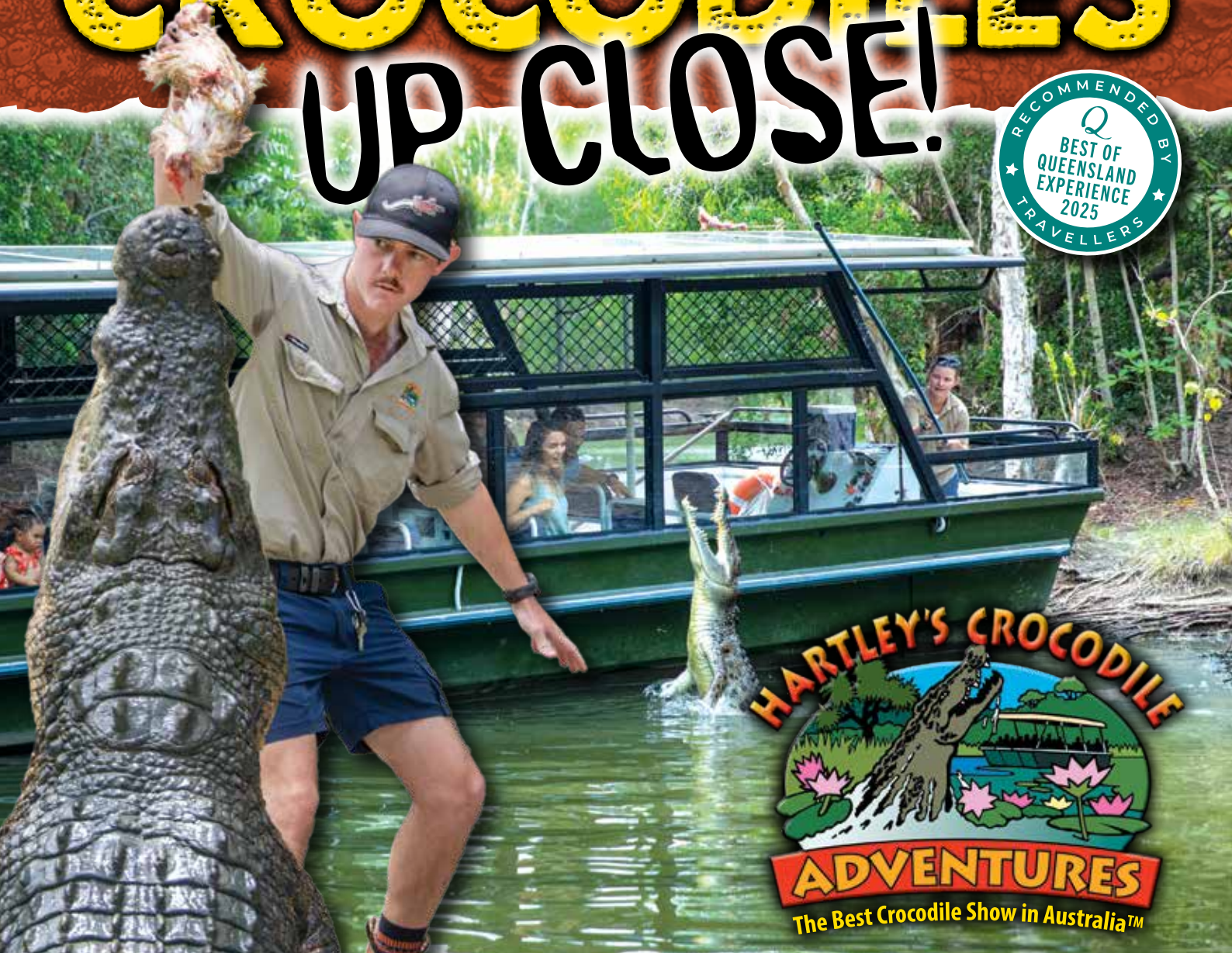


# HARTLEY'S CROCODILES

## UP CLOSE!



**HARTLEY'S CROC CENTRE NOW OPEN**



Reptile encounters • Wetland boat rides • Crocodile feeding • Wildlife presentations • Licensed Restaurant

# Get Wild!

Let the Hartley's team take you on a journey of discovery into the 'wild' world of Australian native and exotic animals. Our 28 hectare wildlife sanctuary is nestled in the picturesque Wangetti Valley, in the heart of the Wet Tropics World Heritage Area. You will see crocodiles in a natural melaleuca wetland lagoon; cassowaries in a rare riverine rainforest; kangaroos and emus in an expansive woodland; free flight predatory birds; iconic marsupials like koalas and wombats; colourful reptiles from abroad, plus our accredited sustainable crocodile farm.

Hartley's Crocodile Adventures has something for everyone with a passion for nature and wildlife. Our dedicated team delights in imparting their knowledge and sharing insights and stories about the natural world and how to be safe in croc country. Our daily presentations strike the balance between entertainment and educational content.

This family owned, local business is widely recognised as one of Australia's leading nature based advanced eco-adventure experiences.

## HARTLEY'S CROC CENTRE

### Australia's leading crocodile interpretive centre

The recently opened 'Hartley's Croc Centre' uses multi-media technology in 7 languages to showcase the history of Hartley's Creek and the story of the Queensland crocodile.

The story starts with a life size model of *Quinkana Fortirostrum* which inhabited an ancient landscape in the Chillagoe area over 40 million years ago. Following on from ancient times, the story touches on how the Yirrganydji people lived with crocodiles. The legend of Dumari explains why people should be wary of crocodiles. With European settlement came crocodile hunting. The Pawlowski's were crocodile hunters, who became conservationists and lobbyist when wild populations decreased in the 1960's and built the first crocodile rearing facilities in Australia.

With the opening of the Cook Highway, a Teahouse was built on the banks of Hartley's Creek in 1934. The following year, a crocodile, later called Charlie entertained motorists while waiting for their refreshments. The touch screen displays delve into the construction of the Cook Highway, the legend of Charlie the crocodile and the evolution of a Teahouse into today's eco-wildlife attraction and the role Hartley's has played in the conservation of crocodiles and education of visitors to our region. The crocodile attacks in the 1980's highlighted the need to protect both people and crocodiles with science-based conservation plans and public education. The visitor journey concludes with a display teaching people how to be Crocwise in Croc Country. The various videos give practical tips on how to avoid unwanted confrontations with crocodiles.



# SNAKE SHOW

10.00am & 2.00pm

*Some say Australia is blessed with snakes – many disagree!*

Learn about the many differences between pythons and venomous snakes. Listen to professional advice on how to avoid snake bite and see a demonstration on how to apply potentially lifesaving first-aid. Take the opportunity to pat a python and have your questions answered by our knowledgeable Keepers.



# CROC FEEDING

11.00am

**In our Hartley's Croc Feeding Arena**

Come meet colourful local characters like "Dougjie", who notoriously terrorised golfers in Port Douglas. Watch our Croc Handlers as they interact with large aggressive crocodiles in a natural setting, while imparting their extensive knowledge on crocodilian evolution and behaviour. Get your camera ready for the croc feeding.

Afterwards, meet Australia's Freshwater Crocodile, naturally found in the inland waterways of Northern Australia.



# CROC ATTACK SHOW

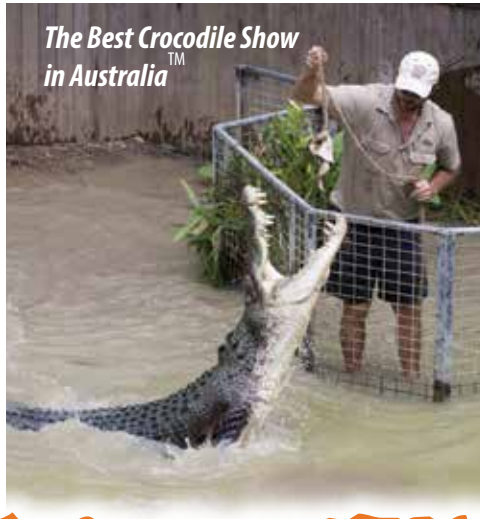
3.00pm

**In our Wildlife Amphitheatre**

This legendary show has entertained and educated visitors to North Queensland for generations.

Learn how to stay safe in croc country and what to do if attacked by a crocodile.

Our professional Croc Handlers will entice Hagrid to demonstrate natural behaviours like the "Head Shake" and the infamous "Crocodile Death Roll", followed by a daring hand feed.



*The Best Crocodile Show in Australia™*

# BIG CROC FEED™

10.30am or 1.00pm

**A personalised guided tour with a Hartley's Crocodile Handler.**

Duration of 45 minutes for a max. of 4 participants, 16+ years of age. Bookings essential. Conditions apply\*.

- **\$160.00 per person self drive, includes park entry.**
- YOU feed a large Saltwater (Estuarine) Crocodile.
- Learn interesting facts on both Freshwater and Estuarine Crocodiles.
- Meet and hold a juvenile Estuarine Crocodile.
- Receive a souvenir photo holding a juvenile croc.
- A genuine Big Croc Feed Certificate signed by your Crocodile Handler.
- Free bottle of chilled water.



Transfers available from Cairns and Northern Beaches (\$220.00), Palm Cove (\$205.00) and Port Douglas (\$236.00) See other conditions\*

# HARTLEY'S KOALA BREAKFAST

- A delicious cooked breakfast, including scrambled eggs, bacon, hash browns, sausages and toast with fruit juice, tea or coffee. Available from 8:30am to 9:30am.
- A friendly Koala and Wildlife Keeper will join you on the dining deck between 9:00am and 9:30am.
- After breakfast, enjoy the scheduled wildlife presentations and a boat cruise on Hartley's Lagoon.

Advance bookings are required and must be made by 4:00pm the day prior, subject to availability.

**SELF-DRIVE Adult \$83.00, Child (4-15 yrs) \$41.50**

**WITH TRANSFERS**

**Cairns: Adult \$143.00, Child \$71.50**

**Palm Cove: Adult \$128.00, Child \$64.00**

**Port Douglas: Adult \$159.00, Child \$79.50**

Book online ([www.crocodileadventures.com](http://www.crocodileadventures.com))



# DINING WITH THE CROCS

*"A crocodile burger please... and make it snappy!"*

Watching the crocodiles getting fed is not only thrilling but can make you feel hungry. Whether you're craving a coffee, fancying a focaccia or savouring a salad, we have a menu to suit everyone. Be adventurous and try some crocodile!

Coffee and snacks are available from 8.30am to 4.00pm at Lilies Restaurant overlooking Hartley's Lagoon.

Hot and cold meals offered from the servery between 9.30am and 2.30pm.

Visitors must pay entry fee to gain access to restaurant.

# PRESENTATIONS

## RESTRICTIONS ON HOURS, ACTIVITIES & CAPACITIES

The owners reserve the right to vary the opening times, amend or cancel wildlife presentations, animal encounters and boat cruises, alter visitor capacity and restrict the availability of food and beverage without prior notice in response to government health directives, severe weather conditions, safety reasons or other operational issues.

- 9.00am**  **CASSOWARY FEEDING**  
Learn about these magnificent endangered rainforest birds and help our keeper to feed them.
- 9.00am**  **CROCODILE FARM TOUR**  
Gain an insight into the operation of our crocodile farm. Learn how farming contributes to the conservation of wild crocodiles and their habitat.
- 10.00am**  **SNAKE SHOW**  
Discover the world's most venomous snakes and learn how to administer first aid for snake bite.
- 11.00am**  **CROCODILE FEEDING**  
See a huge estuarine (saltwater) crocodile hand fed in a presentation which also features Australia's indigenous freshwater crocodile.
- 1.00pm**  **CROCODILE FARM TOUR**  
Gain an insight into the operation of our crocodile farm. Learn how farming contributes to the conservation of wild crocodiles and their habitat.
- 2.00pm**  **SNAKE SHOW**  
Discover the world's most venomous snakes and learn how to administer first aid for snake bite.
- 3.00pm**  **CROCODILE ATTACK SHOW**  
"The Best Crocodile Show in Australia™" Watch our professional, experienced keepers demonstrate the notorious death roll and head shake.
- 4.00pm**  **CASSOWARY FEEDING**  
Learn about these magnificent endangered rainforest birds and watch them devour tropical fruit - whole!
- 4.30pm**  **KOALA TALK AND FEED**  
Koalas sleep most of the day. Feed time is your chance to watch them come alive when presented with fresh gum leaves.



# BOAT CRUISES



- Take a cruise on Hartley's Lagoon spotting crocodiles and other wildlife in this superb tropical wetland.
- Your admission fee includes one boat cruise. On arrival at Admissions you will be allocated a cruise time. Extra cruise times will be scheduled during busy periods.
- Cruise time approximately 20 minutes.

# WILDLIFE PHOTOS



- CROC HOLDING PHOTO:** 10.30am, 12.00noon, 1.30pm & 2.30pm (extra cost).
- SNAKE & LIZARD HOLDING PHOTOS:** between 10.00am & 4.00pm (extra cost), available outside Croc photo sessions.

## Support WILDLIFE CONSERVATION!



FOR EVERY PHOTO PURCHASED, \$2.00 GOES TO THE NORTH QUEENSLAND WILDLIFE TRUST - for the conservation of native fauna and local habitats. Funds raised protect and care for wild Koalas.

## BOAT CRUISES

- Children must be accompanied and actively supervised by a responsible adult.
- Mobile phones must be switched off for the duration of the ride.
- Passengers must remain seated for the duration of the ride.
- No preferential allocation of seats.
- No food or drink may be consumed on the boat (except bottled water).
- Smoking/vaping is prohibited on the boats.

## WHAT TO BRING

- Sensible walking shoes, a wide brimmed hat and sunscreen.
- You are welcome to bring your own water. Chilled bottled water and soft drinks are available from Lilies Restaurant. Please note, no town water supply at Hartley's.
- On rainy days, an umbrella or raincoat is handy.
- Your camera or video recording device.
- Bird Watchers may wish to bring their binoculars.
- A wheelchair is available for visitors at no charge. Prior booking recommended.
- A limited number of strollers are available for hire.
- Professional photography is not permitted without the prior written consent of management. Copyright will be jointly claimed.

# EXPLORE

*Our natural immersion exhibits are designed to enhance your viewing experience. This expansive property has undergone extensive restoration and is now a thriving habitat for an array of native wildlife.*

**Hartley's Lagoon** – No.1 for croc spotting! Tour the wetlands on a boat cruise and watch crocodiles, birds and the wildlife of the coastal melaleuca habitat.

**Wildlife Discovery Trail** – meet freshwater crocs, water birds and lizards. Explore our tropical walk-through bird aviary.

**Hartley's Croc Centre** – learn about the history of Hartley's Creek and the story of the Queensland crocodile.

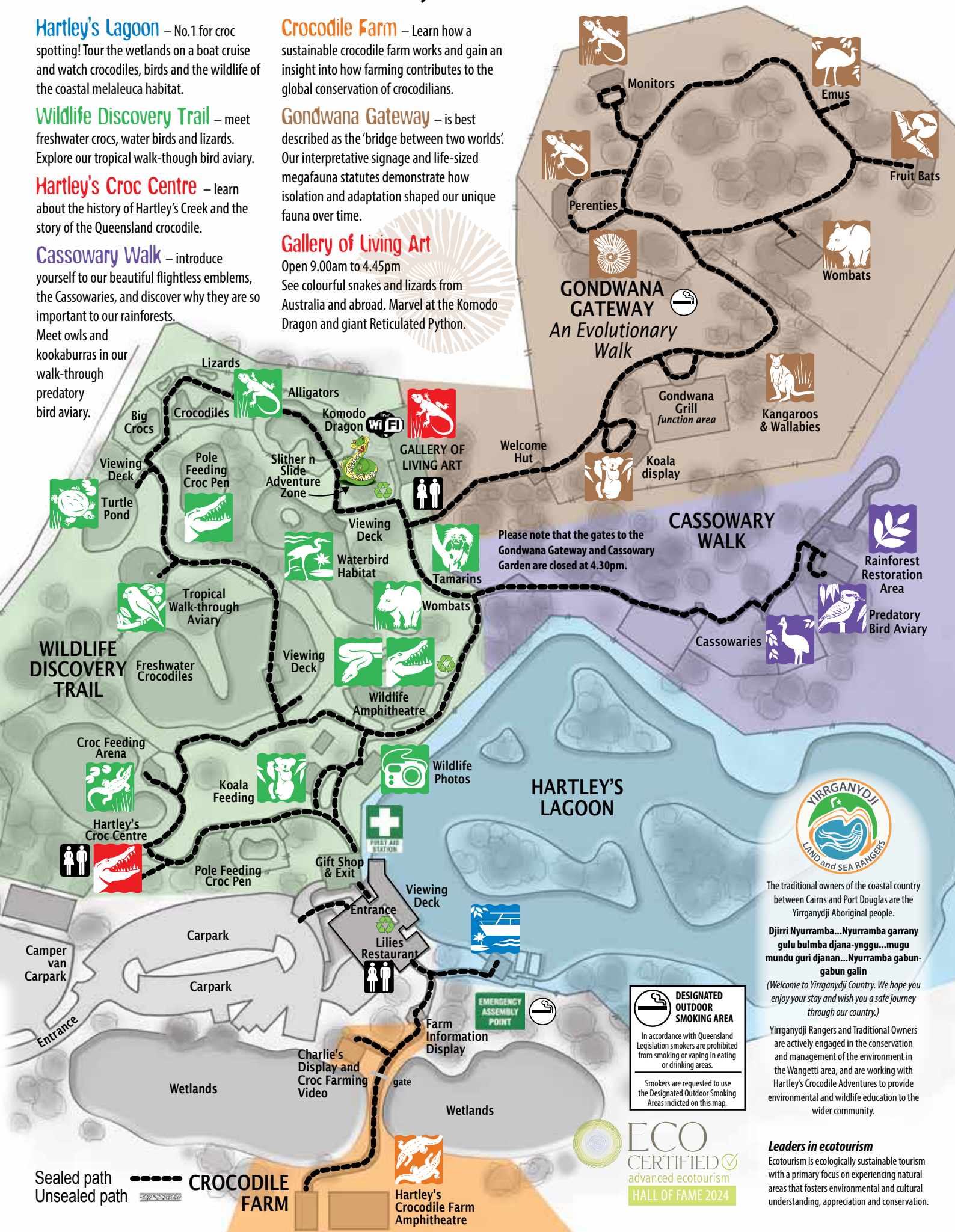
**Cassowary Walk** – introduce yourself to our beautiful flightless emblems, the Cassowaries, and discover why they are so important to our rainforests. Meet owls and kookaburras in our walk-through predatory bird aviary.

**Crocodile Farm** – Learn how a sustainable crocodile farm works and gain an insight into how farming contributes to the global conservation of crocodilians.

**Gondwana Gateway** – is best described as the 'bridge between two worlds'. Our interpretative signage and life-sized megafauna statues demonstrate how isolation and adaptation shaped our unique fauna over time.

## Gallery of Living Art

Open 9.00am to 4.45pm  
See colourful snakes and lizards from Australia and abroad. Marvel at the Komodo Dragon and giant Reticulated Python.



**DESIGNATED OUTDOOR SMOKING AREA**  
In accordance with Queensland Legislation smokers are prohibited from smoking or vaping in eating or drinking areas.  
Smokers are requested to use the Designated Outdoor Smoking Areas indicated on this map.

**ECO CERTIFIED**  
advanced ecotourism  
HALL OF FAME 2024



The traditional owners of the coastal country between Cairns and Port Douglas are the Yirrganydji Aboriginal people.

**Djirri Nyuramba...Nyuramba garrany gulu bulmba djana-ynggu...mugu mundu guri djanan...Nyuramba gabungabun galin**

*(Welcome to Yirrganydji Country. We hope you enjoy your stay and wish you a safe journey through our country.)*

Yirrganydji Rangers and Traditional Owners are actively engaged in the conservation and management of the environment in the Wangetti area, and are working with Hartley's Crocodile Adventures to provide environmental and wildlife education to the wider community.

### Leaders in ecotourism

Ecotourism is ecologically sustainable tourism with a primary focus on experiencing natural areas that fosters environmental and cultural understanding, appreciation and conservation.



# Get Close!

## CROC, LIZARD & SNAKE HOLDING PHOTOS \$28.00

Hold a friendly lizard, snake or a small saltwater crocodile.

### Croc Holding Photos:

10.30am, 12.00noon, 1.30pm & 2.30pm

**Snake & Lizard Holding Photos** – between 10.00am & 4.00pm, available outside Croc photo sessions.



## FRESHIE FEED \$15.00

Pole feed a freshwater croc!

Fun for the whole family.

Available from October to April, after the 11.00am Crocodile feeding. Subject to availability. Limited numbers. Pay at Hartley's admissions on the day.

*Support*

## WILDLIFE CONSERVATION!

FOR EVERY PHOTO PURCHASED, \$2.00 GOES TO THE NORTH QUEENSLAND WILDLIFE TRUST - for the conservation of native fauna and local habitats.



# ZOOTASTIC™

## WILDLIFE 5 ENCOUNTERS

9.30am & 1.30pm

**An exciting, interactive guided tour featuring 5 iconic animals.** Min. age 10 years.

Duration of 60 minutes for a max. of 6 participants.

**\$160.00 per person self drive, includes entry**

- Receive a souvenir Koala patting photo
- Feed fruit to a cassowary
- Hold a python or lizard
- Meet a wombat
- Feed friendly birds and wallabies
- Free bottle of chilled water

# MAMMAL\*MAGIC

11.00am or 1.15pm

**11.00am or 1.15pm Meet the cute and fluffy! Ideal for younger children.** Min. age 6 years.

Duration of 60 minutes for a max. of 6 participants.

**Adult: \$160.00 Child \$80.00 per person self drive, includes entry**

Feed and pat some of our most adorable mammals and Australian marsupials

- Meet our cotton top tamarins
- Feed our kangaroos and wallabies
- Meet a wombat
- Learn about koalas and receive a souvenir koala patting photo

# REPTASTIC

## REPTILE 5 ENCOUNTERS

10.45am

**If you're intrigued by all things scaly, then this is the ultimate tour!** Min. age 10 years.

Duration of 60 minutes for a max. of 6 participants.

**\$160.00 per person self drive, includes entry**

- Hold a python or baby crocodile for a souvenir photo
- Get close with giant pythons, American alligators, lizards and exotic tortoises
- Free bottle of chilled water

### WITH TRANSFERS

- From Cairns & Northern Beaches \$220.00
- From Palm Cove \$205.00
- From Port Douglas \$236.00



### \*CONDITIONS FOR WILDLIFE ENCOUNTERS

- Must be booked by 4.00pm the day prior. Subject to availability.
- We cannot guarantee the above mentioned animals are available on the day.
- Start times may change. Time advised on booking.
- Cost includes entry, personalised tour, boat cruise and public presentations.



# DAY TOURS 2026/27

To make a tour or transfer booking, please contact your **TOUR DESK** or the **TOUR OPERATORS** listed below.

Whilst we recommend these tours and partner operators we take no responsibility for any alterations, amendments or price changes that may occur. Please note, the definition of a 'child' varies with different operators. All prices include GST.



## DOWN UNDER TOURS

Phone: (07) 4047 9066

### HARTLEY'S HALF DAY TOURS

**HCPM - Cairns & Northern Beaches pick up (from 11:40am).**

Scenic coastal drive to Hartley's. Free time to explore the park before the snake show, wetland cruise, Crocodile Attack Show, wallaby feeding, cassowary feeding and koala talk. Meals available (own expense).

Depart 4.40pm.

**PHCPM - Port Douglas pick up (from 7:45am).**

The morning allows ample time to explore this wonderful park, including a boat cruise through the Melaleuca wetlands, the domain of the saltwater crocodile. Take in the Crocodile Feeding and fascinating Snake Show before we return you to Port Douglas. Depart 1.30pm.

**HCPM CXC & HCPM CXN Cruise Ship Shore Excursion Cairns & Yorkey's Knob pickups (from 10.30am).**

Free time to explore the park and a thrilling close-up view of saltwater crocs, on the Melaleuca wetland cruise. Depart 2:00pm.

*Operates on select days, as per cruise ship schedule.*

**Cairns, Northern Beaches & Port Douglas:**

**Adult \$130.00 Child \$68.00 Family \$352.00**

**KURANDA RAIL, SKYRAIL RAINFOREST CABLEWAY and HARTLEY'S**

**KHCXC -** Journey to Kuranda on the historic Scenic Railway through the spectacular Barron Gorge. Experience Skyrail Rainforest Cableway; gliding just metres above the World Heritage listed rainforest. Transfer to Hartley's for an afternoon of activities including boat cruise, Croc Attack Show and wildlife presentations.

**Cairns:**

**Adult \$285.00 Child \$147.00 Family \$759.00**

Please check with Down Under Tours for days of operation or visit our website for details.



## PORT DOUGLAS TRANSFERS

Book online: [www.crocodileadventures.com](http://www.crocodileadventures.com)

or see your tour desk.

Morning and afternoon tours. Includes entry to Hartley's and return coach transfers.

**Adult \$126.00 Child \$63.00 Family \$315.00**

## KURANDA & OUTBACK TOURS

ex Port Douglas

Book online: [www.kurandatours.com.au](http://www.kurandatours.com.au)

Phone: (07) 4098 5059

### HARTLEY'S, SKYRAIL RAINFOREST CABLEWAY, KURANDA SCENIC TRAIN & PALM COVE Full day tour

Small group full day tour; pick up 8am for Hartley's morning activities including crocodile cruise, cassowary feeding, crocodile feeding show, complimentary morning tea. Transfer 11.35am for an amazing gondola experience over World Heritage listed rainforest with Skyrail Rainforest Cableway, then descend below the canopy to Freshwater on the historic Scenic Railway. Free time to explore Palm Cove on return to Port Douglas (all food, drinks and retail therapy at own cost).

**Hartley's + Skyrail & Scenic Train:**

**Adult \$290.00 Child \$165.00 Family \$795.00\***

**Hartley's + Skyrail OR Scenic Train:**

**Adult \$230.00 Child \$145.00 Family \$675.00\***

\*Family: 2 Adults, 2 Children 4-14 years old



## BEACHES MEET & GREET

Phone: (07) 4059 2713

### BIG CROC FEED™ (with transfers)

Feed a giant estuarine crocodile as part of an exclusive guided tour with an experienced Hartley's crocodile expert, plus souvenir croc photo & signed Big Croc Feed certificate. Numbers limited: 2 - 4 pax, 16 yrs+, book min. 24 hours notice.

Available daily but subject to availability.

**Departs Cairns from 8.00am: Adult \$220.00**

**Departs Palm Cove 9.00am: Adult \$205.00**

### HARTLEY'S KOALA BREAKFAST

Start with a hot Aussie breakfast in the company of a cute koala and its keeper. Enjoy the Hartley's wildlife presentations and activities, including a crocodile show and boat cruise.

Departs: Cairns from 8.00am &

Palm Cove 9.00am daily. Return 1.30pm.

**Cairns & Northern Beaches:**

**Adult \$143.00 Child \$71.50**

**Palm Cove: Adult \$128.00 Child \$64.00**



## Three amazing wildlife parks within five days for one great price!

- 1 Hartley's Crocodile Adventures** is the best place to see crocodiles in the North. See an array of native and exotic wildlife in entertaining and educational wildlife presentations.
- 2 Kuranda Koala Gardens** is a boutique wildlife park showcasing Australia's iconic wildlife. Feed tame kangaroos, meet a quokka and walk through the nocturnal house.
- 3 Birdworld Kuranda** is a large walk-thru free flight aviary housing a dazzling array of Australian birds and exotic parrots originating from the world's tropical rainforests.

**Adult \$88.20 Child (4-15 years) \$44.10 Family (2 Adult + 2 Child) \$220.50**

The Great Australian Wildlife Experience package is a self-drive experience. Coach transfers are not available. Visitors need to make their way to each of the three parks by car within a five day period. Purchase this package online or upon arrival at attraction. Please note that the three parks are not in close proximity. Both Kuranda Koala Gardens and Birdworld Kuranda are situated within the Kuranda Heritage Markets, approximately 45 minutes drive from Hartley's. Refer to map on back page for locations.





**THREE DAYS FOR THE  
3 DAY  
RETURN  
PASS  
SELF DRIVE  
ONLY  
PRICE OF ONE  
CONDITIONS APPLY\***



# ENTRY PRICE LOCATION

## SELF DRIVE

Entry can be purchased on arrival

**Adults: \$50.00**  
**Child: \$25.00 (4-15yrs)**  
**Family: \$125.00**  
(2 adults and 2 children)

**Price includes all wildlife shows  
and one boat cruise**

## DRIVE YOUR OWN VEHICLE OR HIRE A CAR

40km north of Cairns, 15km north of Palm Cove & 25km south of Port Douglas on the scenic Captain Cook Highway.



# TRANSFERS

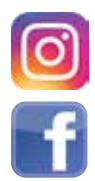
**From Cairns & Cairns Beaches**  
Beaches Meet & Greet (07) 4059 2713  
Down Under Tours (pm only) (07) 4047 9066

**From Port Douglas**  
Excellence Coaches 0475 457 320  
Down Under Tours (am only) (07) 4047 9066  
RogersRides 0450 804 495

*Morning & afternoon departures include  
all activities from time of arrival.*



Hartley's Crocodile Adventures actively supports the North Queensland Wildlife Trust. Established in 2004, the Trust raises funds for the conservation of native fauna and local habitats. For each dollar you donate to the Trust, Hartley's Crocodile Adventures will match it dollar for dollar\*. Proceeds from the recycling of plastic bottles goes to the Trust along with \$2.00 for every wildlife photo purchased.  
\*Conditions apply



\*Capacity restrictions may limit availability of the 3 Day Pass.

# CROCTIQUE™

BESPOKE • LUXURY • LEATHER

Hartley's creates bespoke luxury crocodile skin leather goods under the Croctique brand. The skins used in the manufacture of our superb leather creations are sourced from crocodiles raised at Hartley's Creek Crocodile Farm.

Croctique presents a limited range of bespoke leather fashion accessories sourced from crocodiles raised at Hartley's, including hand bags, purses, men's and ladies wallets and belts.

**FASHIONABLE & FUNCTIONAL CROCODILE LEATHER GOODS**

[www.croctique.com.au](http://www.croctique.com.au)

IMPRESSART 0216 Printed for overseas distribution.



**OPEN DAILY**  
**8.30am - 5.00pm**  
**Ph: + 61 7 4055 3576**  
**crocodileadventures.com**

CLOSED: Christmas Day, Cairns Ironman 14th June 2026  
4019 Captain Cook Highway, WANGETTI 4877  
Email: [reservations@crocodileadventures.com](mailto:reservations@crocodileadventures.com)  
PO Box 171 Palm Cove Qld Australia 4879

- CONDITIONS**
- Children must be accompanied and actively supervised by a responsible adult.
  - As a condition of entry, you must comply with any applicable government health and safety directive which may be enforceable at the time of entry.
  - Failure to comply with any instructions from our staff may result in your expulsion from the property.
  - Rude and/or abusive behaviour towards staff, contractors or fellow visitors will not be tolerated.
  - We accept most major credit cards (Visa, Mastercard and Amex). Payment by credit/debit card is preferred and appreciated.
  - Other entry conditions stated at Reception and on our web page.
  - No concessions, reductions or discounts on the family rate.
  - Discounts available for locals (with ID) and holders of some concessionary cards.

